

BOOROWA

beautiful





Boorowa Visitor Information Centre

Phone: 02 6385 3885
 44 Marsden Street
 (PO Box 65)
 Boorowa NSW 2586
OPEN 7 DAYS from 10am – 5pm
(Closed Christmas, Boxing and New Years days)



Boorowa Visitor Information Centre

The Boorowa Visitor Information Centre located in the Old Court House Building is a great first stop for any visitor to the region.

Pop in for a friendly welcome. The volunteers will provide you with local information, things to see and do and free maps.

The Centre is also home to the Arts and Crafts Co-op which stocks locally made craft including artwork, sewing, clothes, children's ware, woodwork, giftware, produce and home cooking.

Parking around the Old Court House grounds is perfect for all vehicle types including motorhomes, caravans, trucks and trailers and only a short walk to the shops and Australia's cleanest facilities.

BOOROWA

beautiful



CONTENTS

| | |
|----------------------------------|----|
| Welcome to Boorowa | 03 |
| Touring Information | 04 |
| Boorowa and Villages | 06 |
| Irish Connection | 07 |
| What's on throughout the year | 08 |
| The Locals Guide | 10 |
| Biking around town | 11 |
| Parks and Gardens | 11 |
| Historic Walking Trails | 12 |
| Pubs and Clubs | 14 |
| Eateries | 16 |
| Accommodation | 18 |
| Shopping | 20 |
| Produce | 22 |
| Food and Wine | 23 |
| Lifestyle | 24 |
| Homes | 25 |
| Schools | 26 |
| Health and Wellbeing | 27 |
| Business Directory | 28 |
| Travelling with pets | 30 |
| Sporting Clubs and Organisations | 30 |
| Suggested Driving Itineraries | 31 |

CONTRIBUTORS

Graphic Design
 Kristy Murphy
 klmdesign.hi@gmail.com
 © KLM DESIGN

Photography
 Clover and Rye, McGrath Photovideo,
 Holly Bradford and Martin Ollman.

A special thank you to all the local talent who kindly volunteered to participate in the photography.



WHEN YOU'VE FINISHED WITH YOUR BOOROWA GUIDE PLEASE SHARE WITH FAMILY AND FRIENDS.

Welcome to Boorowa



I invite you to visit Boorowa located in the wider Canberra Region but uniquely situated amongst the ever growing Hilltops Region renowned for its award winning Food, Wine and Produce, wide open spaces, and delightful sunsets. Come and experience country hospitality with the friendly, welcoming locals.

It is time to stop and smell the roses, and feel a sense of clarity while staying in Boorowa.

I hope you enjoy this comprehensive Information Guide put together by our Economic Development and Tourism Team.

Tourism is an important part of our economic and social success.

Beautiful Boorowa awaits your arrival!

I hope to see you there.

Wendy Tuckerman

HILLTOPS COUNCIL



"ONE OF AUSTRALIA'S SECRET PLACES"

AS MENTIONED ON ABC TALK BACK RADIO



Boorowa Court House Arts & Crafts Co-op

Open 7 days 10am – 5pm
 Handmade craft, Devonshire tea's and light refreshments, local jams, pickles, relish, home cooking, Boorowa historical books and souvenirs.

Home of Boorowa's Visitor Information Centre.
 44 Marsden Street (PO Box 65)
 Boorowa NSW 2586
 p. 02 6385 3885



HOW TO GET TO BOOROWA

Boorowa NSW is centrally located 328km from Sydney, 113km north of Canberra, 174km north east of Wagga and 619km north east of Melbourne.

ROAD

Boorowa is located on the Lachlan Valley Way and is just off the Hume and Barton Highways.

DRIVING TIMES TO BOOROWA

| Travelling From | Driving Time |
|-----------------|--------------|
| Albury | 3hrs |
| Batemans Bay | 2hrs 45mins |
| Bathurst | 2hrs |
| Canberra | 1hr 20mins |
| Cooma | 2hrs 30mins |
| Dubbo | 3hrs 15mins |
| Goulburn | 1hr 25mins |
| Melbourne | 6hrs 20mins |
| Orange | 2hrs |
| Sydney | 3hrs 30mins |
| Wagga Wagga | 2hrs 10mins |
| Wollongong | 2hrs 50mins |
| Harden | 30mins |
| Young | 35mins |
| Yass | 40mins |
| Cowra | 50mins |
| Crookwell | 1hr 5mins |

NOTE: Times and distances are to be used as a guide only.



This map may be subject to change without notice. Please contact the Boorowa or Young Visitor Information Centre for further details or updates.

TOURING

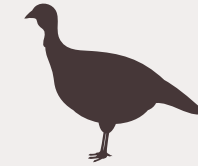
Hilltops Tourism will happily tailor an itinerary specific to your interests. For bus tours a knowledgeable local tour guide can be arranged to jump on-board your coach and provide a personalised tour.

Email the Visitor Information Team at vic@hilltops.nsw.gov.au for more information.

Fascinating Facts

BOOROWA WAS ORIGINALLY CALLED 'BURROWA'

The name Burrowa is derived from the local aboriginal language and refers to a native bird, 'the Plains Turkey'.



POPULATION

Approximately 2,600

ELEVATION

488m

AVERAGE TEMPS

- **Spring (Sep - Nov):**
Min 5, Max 20
- **Summer (Dec - Feb):**
Min 12, Max 29
- **Autumn (Mar - May):**
Min 6, Max 21
- **Winter (Jun - Aug):**
Min 1, Max 13



WEATHER

Average rain falls 614mm

LOCATION

- Boorowa is 328km NE of Sydney - approximately a 3.5 hour drive.
- 113km SE of Canberra - approximately a 1.25 hour drive.

AREA

2,579 km²

VILLAGES

- Rye Park
- Rugby
- Reids Flat
- Frogmore

See page 6 for more village information.

ROSES

The roses in the main street are called Rosa 'Le Sevilliana' roses - they also come in white and pink.

MAJOR INDUSTRY

Agriculture



RANDOM

- Home of the Superb Parrot
- No Traffic Lights
- No Parking Metres



RADIO STATIONS

ROCCY FM - 93.9
2LF AM - 1350
COOL STREAM FM - 87.6
2GZ RADIO FM - 105.9



EMERGENCY NUMBERS

Boorowa Hospital
02 6385 3004

NRMA Roadside Assistance
13 11 11

Police/Fire/Ambulance
000

Poison Information Centre
13 11 26



ELECTRICITY

Supplied by Essential Energy

NATURAL GAS

Supplied by ACTEW AGL

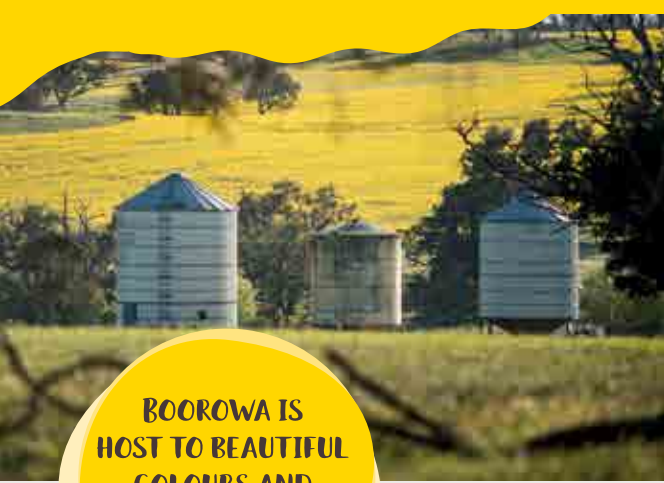


CHURCH SERVICES

St Patricks Catholic Church
66 Queen Street
Service Time: Saturday 6pm

Anglican Church
36-38 Queen Street
Service Time: Sunday 9:30am

Uniting Church
Cnr Farm & Brial Street
Service Time:
Sunday 10:30am



**BOOROWA IS
HOST TO BEAUTIFUL
COLOURS AND
VIEWS ALL YEAR
ROUND!**

Boorowa

Beautiful Boorowa presents picturesque and varied landscapes ranging from rugged wooded ridge lines to rolling hills and open grazing land.

The hills and flats host rich grazing country and productive croplands. The ridgelines also contain veins of various precious ores and rare minerals.

The area sits along the borders of the Ngunnawal and Wiradjuri Aboriginal Country.

Europeans settled in the early 1800's which saw the establishment of the agricultural industry this continues to be evident in today's Boorowa. As settlers gradually moved onto the fertile flats and valleys of the district the towns and villages grew at river crossings.

With the township of Boorowa quickly emerging as the significant centre, encompassed by the surrounding hamlets Rye Park, Reids Flat, Rugby, Frogmore and the localities of Hovells Creek, Lang Creek, Narrallan, Tarengo and Wallah Wallah.

The importance of the transit routes from Goulburn were reinforced by the gold rush that occurred at Lambing Flat from 1860.

Villages

Take a short scenic drive to explore Boorowa's beautiful surrounding villages.

FROGMORE

Frogmore is approximately 20 minutes drive out of Boorowa and not so long ago was a thriving gold, silver, copper and tungston mining town.

Frogmore Hall was resurrected from the ashes as a result of the first 'Pass the Hat Around' concert with Lee Kernaghan.

RUGBY

The first settlers of Rugby faced many hardships in trying to shape farms out of dense bushland. The settlers however never relented and today the Rugby area produces some of the finest Merino Sheep in the State.

REIDS FLAT

Reids Flat gained a reputation for being associated with Bushrangers. An infamous conflict occurred at William Fogg's property where Frank 'Darky' Gardiner was taking refuge. The fight was intense with bullets flying in all directions. In the end Gardiner escaped badly wounded and poor William Fogg was arrested for harbouring a criminal. The remains of the cabin where the conflict took place are still visible today.

RYE PARK

Rye Park is one of the richest silver mines in the State for many years, along with rich grazing land that is still utilised today. There is also evidence that convict labour was employed at different properties in and around Rye Park, with old leg irons and the etchings in bricks having been found.

Irish Connection

Boorowa has strong Irish connections which date back to the 1820's.

Cousins Roger Corcoran and Ned Ryan were transported to New South Wales from Clonoulty in Tipperary, Ireland.

The sentence arose from their crime in the destruction of a hospital that was occupied by a garrison of English troops.

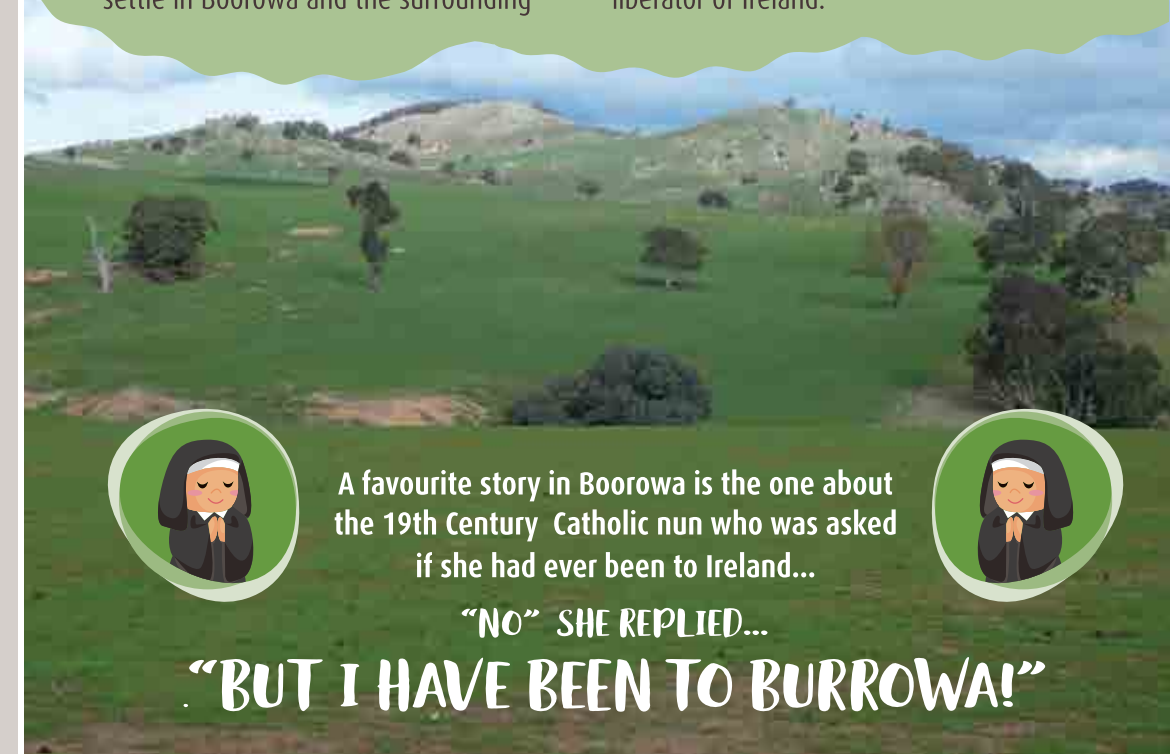
They were sent to Boorowa on a 'Ticket of Leave' which was a conditional offer of freedom. Both men played prominent roles in the settlement and growth of the region. Boorowa and Clonoulty are today proud of their twinning charter.

Roger and Ned encouraged all their friends and relatives from Ireland to come and settle in Boorowa and the surrounding

towns. This resulted in Boorowa's strong Irish heritage and is one of reasons people visit the town today is to trace their Irish ancestry.

Ned Ryan was also instrumental in a must see site along the Shamrock Trails, St Patricks Roman Catholic Church. The church in all its beauty is reminiscent of a cathedral.

Ned Ryan was instrumental in building the new Church and bringing priceless marble from Italy to form the magnificent altar. An interesting fact that is prominent above the doorway is a stained glass window dedicated to Daniel O'Connell, the liberator of Ireland.



A favourite story in Boorowa is the one about the 19th Century Catholic nun who was asked if she had ever been to Ireland...

"NO" SHE REPLIED...

"BUT I HAVE BEEN TO BURROWA!"





ROTARY MARKETS
4TH SATURDAY
OF EVERY MONTH
FROM 9AM-2PM
Old Court House Grounds



For further information on these events please contact:
THE BOOROWA VISITOR INFORMATION CENTRE
02 6385 3885
OR VISIT
www.visithilltopsregion.com.au



What's on Calendar

Boorowa has a number of exciting events held throughout the year that provide visitors with the opportunity to experience Boorowa's community spirit. These events include:

SPRING EVENTS

- **Irish Woolfest** – Every October long weekend.
- **Football and Netball Carnival** – October.
- **Reids Flat Gymkhana** – November.



AUTUMN EVENTS

- **Boorowa Show** – first weekend in March.
- **ANZAC Day Service** – 25 April
- **Boorowa Picnic Races** – April/May.

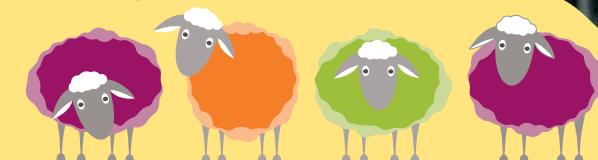
SUMMER EVENTS

- **Carols by Candlelight** – December.
- **Christmas on Pudman** – December.
- **Australia Day Celebrations** – 26 January.



BOOROWA IRISH WOOLFEST

THE RUNNING OF THE SHEEP!



OCTOBER LONG WEEKEND EVENT - www.irishwoolfest.com.au

Boorowa is action packed every October long weekend.

Imagine sheep rampaging down the main street of Boorowa leading the colourful Street Parade on the Sunday of the October long weekend. This is the feature event not to be missed.

'The Running of the Sheep' has been likened to the Running of the Bulls in Pamplona and is considered the Australian woolly version.

Probably not so dangerous but certainly as visually exciting!

Irish bands and dancers create the Irish spirit at the Irish Woolfest whilst top Irish performers appear on the

main stage. Visitors love the sheepdog component when they see trusty kelpies leaping on and off the sheep's back as they race down the street guided by farmer Ashley on his four wheel motorbike. This is an opportunity to see Boorowa's fine sheep up close and personal.

A sheep is shorn and the fleece is thrown on the stage to receive a spiritual thanksgiving for the fine wool of the district and the Ecumenical Blessing of the Fleece. Sheep shearing and displays captivate visitors all day providing an opportunity to see sheep in all their glory.

The Irish Woolfest showcases the Irish heritage and fine wool that is Boorowa. A Growers' Market and a variety of quality stalls showcase country wares.

This is a free street festival for all to enjoy.

Don't miss this unique, true country experience which shows that part of Boorowa's charm is its continuing Irish connections.

ONE FOR THE BUCKET LIST!

The locals love it and you will too!



Diary Dates

Labour Day Long Weekend
(First weekend in October)

— 2016 —

Friday 30th September to
Monday 3rd October

— 2017 —

Friday 29th September to
Monday 2nd October

— 2018 —

Friday 28th September to
Monday 1st October



The Locals Guide to Boorowa

BOOROWA'S TOP 10 THINGS TO DO



BOOROWA TRAILS

Explore Boorowa's Irish connection through the CBD, Riverwalk, Parks, Gardens and township.

Enjoy the heritage trails and natural landscape.



HILLTOPS REGION

Take a tour across the region and be introduced to some unique communities, cafes, attractions and a variety of award winning wines and produce.



IRISH WOOLFEST

One for the bucket list whilst celebrating Boorowa's heritage. This event is always held on Sunday during the NSW Labour Day long weekend.



CATHOLIC CHURCH

Appreciate the magnificent architecture and stain glassed windows the St Patrick's Church is renowned for - donated by pioneering Boorowa families.



WAR MEMORIAL

The focal point is the iconic Town Clock - home to the Boorowa War Memorial. Take a minute to reflect and appreciate our war history in Dr Kelf Park.



HISTORICAL MUSEUM

Take a step back in time at the Boorowa Museum.

Open Saturday mornings and via appointment.



OLD COURT HOUSE BUILDING

Let the kids enjoy a real court room without the drama. Admire the historic building whilst browsing the Arts and Crafts.



BOOROWA OLYMPIC SWIMMING POOL

Where summer holiday memories are made, enjoying a potato scallop, a friend's birthday party and the tranquil surrounds.



BOOROWA GOLF COURSE

Hire the golf buggy, buy a round of beers and explore the course through a game of nine hole golf with your mates.



BOOROWA CEMETERY

A scenic walk to take a bird's eye view of Boorowa and a moment to thank the ones who have gone before us.

Bike around Boorowa

TAKE ADVANTAGE OF THE WIDE OPEN SPACES

Peddle and explore the beautiful countryside.

Imagine yourself on a bicycle with the fresh country air filling your lungs and breezing through your hair, cycling the community is definitely one of the most relaxing ways.

For more information on bike routes, speak to the friendly team at the Visitor Information Centre.



Beautiful Parks and Gardens

ENJOY THE SERENITY OF BOOROWA



Beautiful Historic Walks

FOLLOW THE SHAMROCK TRAILS

Immerse yourself into Boorowa's beautiful local history by following one of the three Shamrock Trails.

The trails tell a prolific and potted history of Boorowa providing a compelling story of the bushrangers, settlers, convicts and gold in Boorowa. Below is a guide to a 25 minute trail walk.

START

At the Old Court House Building Visitor Information Centre located at 46 Marsden Street, Boorowa.

1. COURT HOUSE 1884

Judge Forbes presided on the first case in January 1886. It ceased to function as a court house in 1988 and is now the Visitor Information Centre and an Arts and Crafts Shop and Tea Room. The original court fittings remain. **Open daily from 10.00am to 5.00pm.**



ST PATRICKS CHURCH

2. ST PATRICKS CHURCH 1877

Presbytery 1864, Convent 1885 (now a private residence) and St. Joseph's School 1888.

The church has outstanding stained glass windows and marble altars. The south windows, above the main entrance, were imported from Ireland in 1881 and depict Daniel O'Connell, the Liberator of Ireland, with the saints Patrick, Bridget and Columbia. **Open daily.**



BOOROWA RIVER



GLENARA

3. THE DAIRY

This rare slab dwelling was the residence of one of the town's first dairymen. The house was in two sections - living quarters at the front and amenities at the rear. These are still clearly visible though they were connected in later years with more living space. The slab shed at the rear was moved from the adjoining block. The house was named Dendavilleigh by the current owners and is now a private residence.

4. POST OFFICE 1876

The original Post Office (1874) adjoins this building and is now a private residence. It was originally known as the Burrowa Post Office but was changed to Boorowa in 1914 to conform with the other public buildings.

5. GUILD HALL 1909

Built for the Holy Catholic Guild, it was used for social functions and later the Empire Theatre. The Guild also conducted the St. Patrick's Day Carnival. The building is basically unchanged.

6. CROWN INN 1853

The original hotel was a little further down Pudman Street. The inn changed its name to the Court House Hotel in 1866 as local court sittings were held there. The present building was constructed in 1908.

7. BURROWA NEWS PRINTERY 1936

The Burrowa News was first printed in 1874. This building, housed the paper from 1936 to the war years. The masthead was changed to the Boorowa News in 1951. The original name remains on the building facade.

8. J.J. CUMMINS BUILDING 1919

Mr. Cummins was a builder, carpenter and furniture manufacturer. Additions were made in 1922 and 1927 to accommodate his expanding business. In 1951 a fire destroyed the timber yards and residence.

9. WAR MEMORIAL 1933

Constructed of local bricks, Western Australian Jarrah flooring, Queensland maple windows and a doorstep of Hawkesbury sandstone this eye catching monument serves as the focal point for ANZAC remembrance and the RSL meeting room. Note the clock uses the ANZAC letters instead of numerals.

10. UNION BANK 1930

The bank commenced business in Burrowa in 1885. This building, opened in 1930, features a central arch, which was the distinguishing feature of their branches. The merger with the Bank of Australasia in 1951 created the ANZ Bank. This branch closed in 1996 and is now a private residence.

11. SHAMROCK BASE

This base marks one hundred years of local government in Boorowa and commemorates Patrick Ryan the first Mayor (1889-1890 & 1904-1905) Behind is the current Council building which was completed in 1956.

12. CENTRAL HOTEL 1912

The first hotel built on this site was the Harp of Erin in 1876. The slab and galvanised iron building was destroyed by fire in 1911. This double-storey building replaced it and was named the Central Hotel. The hotel closed in 1998.



WAR MEMORIAL

13. MURPHY BROTHERS 1919-28

The original slab and iron store (c 1880) was replaced in two stages by builder J.J.Cummins. Note the beautiful custom made counters and the unusual interior-lit lead light in the ceiling.

14. MODEL STORE 1918

Many of the town's early businesses faced Market Street. The Learmont Family built this double-storey building to replace their store in Market Street. It has 17,000 square feet of retail space. Note the central staircase to the galleried upper level and the stained glass windows.

15. BANK OF NEW SOUTH WALES 1909

The bank opened in Wentworth House in 1866. It later moved to Market Street and subsequently to a bungalow style building facing Marsden Street. This building is still visible behind the extension to the street added in 1956. The bank was renamed Westpac in 1981. The branch closed in 2000.

16. GEORGE PATTERSON STORE 1882

One of the few buildings constructed of pise (rammed mud) known to still exist in a commercial precinct. The building has had many uses including that of an undertaker. The building opened as the Boorowa Museum in 1975. **Open Saturday 10am - 12 noon or by appointment.**

17. ROYAL STANDARD HOTEL 1880

The last hotel to be built in Boorowa. First a single-storey structure, the second floor was added in 1905. Note the different brickwork at



ROYAL STANDARD HOTEL

the side and the original footpath flagging. The last additions were in 1924. The name was subsequently changed to Boorowa Hotel (image above).

18. STAR HOTEL 1867

The name was changed to Clonoulty in 1874 by the third licensee William Corcoran after his home village in Ireland. The hotel became a boarding house in 1895 and is now restored as a private residence.

19. GLENARA 1866

This Victorian Georgian six bedroom residence was built for the owner of the Burrowa Union Flour Mill. The building retains most of its original features.

20. MILL MANAGER'S HOUSE

This picturesque little cottage was built for the Manager of the then adjoining Flour Mill. The cottage remains in its original form as a private residence.



Note: Map is a visual guide only



Pick up your FREE 'Shamrock Trail Map' from the Visitor Information Centre, detailing 3 different historic trails.

Beautiful Country Pubs and Clubs

A COUNTRY ESCAPE IS SIMPLY INCOMPLETE WITHOUT A PUB STOP



Picture yourself with an ice cold beer, a hearty meal and a good old yarn.

You'll find a number of great pubs and clubs with character and charm in Boorowa.

Stop in and say g'day to the friendly publicans, meet some of the locals and listen out for the latest local tale! Strike up a conversation about wool prices, the weather or the latest footy scores.

In Boorowa you'll be given a true country experience with good old fashion warm hospitality.

Even the budget conscious traveller can enjoy clean and

tidy essentials and comfy bed accommodation.

Our Pubs and Clubs serve up excellent country size meals and tasty mixed grills that simply won't disappoint.

Make a weekend of it with friends, enjoy live music, Jukebox or DJ on offer on Friday and Saturday nights.

You will be singing and dancing along to some classics.

Ask your friendly publican to find out what's on any weekend.



BOOROWA HOTEL

Join hosts Mike and Young Ward in their family friendly hotel. Filling the earth with light, warmth, laughter and great hospitality.

Terrific restaurant and accommodation. All bookings come with full continental breakfast.

37 Marsden Street, Boorowa NSW 2586

p. 02 6385 3000

e. boorowa.pub@gmail.com

w. www.boorowahotel.com.au

Find us on



A Local Tale is..
BOOROWA IN THE
1970'S
WAS THE
DRINKING CAPITAL
OF AUSTRALIA!



Boorowa Ex-Services & Citizens Club Ltd

'Richy Didge' dining room open Wednesday to Saturday Nights and Thursday to Sunday for Lunch.

Catering for all functions, large & small with many options available including auditorium seating up to 300ppl, private function rooms, squash courts, bowling green, gym, bingo and cards.

55-59 Pudman Street,
Boorowa NSW 2586

p. 02 6385 3338

p. 02 6385 3717

e. boorowaexservices@bigpond.com

Find us on



BOOROWA COURT HOUSE HOTEL

The Court House Hotel offers country style accommodation with 12 spacious air-conditioned rooms, a choice of 8 refreshing beers on tap and a cosy dining room that offers delicious lunches and dinners 7 days a week.

12 Marsden Street,
Boorowa NSW 2586

p. 02 6385 3005

e. courthouseotel73@hotmail.com

w. courthouseotelboorowa.com.au

Find us on and



Beautiful Eateries

DELICIOUS FOOD CHOICES ALL DAY

Boorowa can offer many tasty treats to tantalise your tastebuds with culinary delights.

If you want a morning or afternoon tea experience enjoying Devonshire Teas that are simply delicious with fluffy homemade scones, fresh clotted cream and local berry jams visit the Magistrates Tea Room.

Whether it is a chocolate brownie, friand or blueberry muffin for that quick cuppa with friends; or a good homemade hearty beef pie, it can be found in the streets of Boorowa.

If a good short black, espresso, latte, flat white or cappuccino is more your thing then there are approximately six coffee shops offering plenty of choice.

Why not rate one of our burgers whilst discovering Boorowa, beat the rush for Friday night Fish and Chips at the local cafe, or choose from many of our pizza specialists adding that touch of mediterranean culture to the table.

A great selection to choose from and always a popular choice with the locals.

Visitors travel especially to dine in our local Chinese Restaurant renowned for its quality meals and hospitable service.

Definitely worth making a trip.

BOOROWA HAS
3 PUBS, 2 CLUBS AND
6 COFFEE SHOPS
VARIETY IS THE
SPICE OF LIFE!



Pantry on Pudman

The ultimate coffee and shopping experience.

Bills Beans Coffee, homemade cakes, Duffy's gourmet pies and light lunches as well as a range of local produce and collectable wares.

Opening hours: Monday to Friday 8am-4pm, Saturday 9am-1pm and Sunday 10am-2pm.

107 Pudman Street, Boorowa NSW 2586
p. 02 6385 1943
e. thepantryonpudman@hotmail.com

Find us on and



Town Clock Coffee Shop

Sit and enjoy a delicious coffee and cake whilst enjoying some of the wares for sale.

We offer friendly service and meals that will have you coming back for more.

Open Monday to Friday 8am-4pm and Saturday 9am-3pm.

9 Marsden Street, Boorowa NSW 2586
p. 02 6385 3308



Superb Bakery

Family run bakery, open 7 days.

Freshly baked cakes and slices to compliment your coffee. Full selection of breads, rolls, pies and sausage rolls perfect to eat and enjoy in our large and comfortable café or takeaway.

Superb food and coffee, superb service.

38 Marsden Street, Boorowa NSW 2586

p. 02 6385 1300

e. superbbakery@hotmail.com





Accommodation

RELAX AND UNWIND IN TRUE COUNTRY STYLE

Rest your head at one of Boorowa's Hotels or the Motel located in the heart of the town.

Only a short stroll to cafes, pubs and clubs. Enjoy a night out without having to drive.

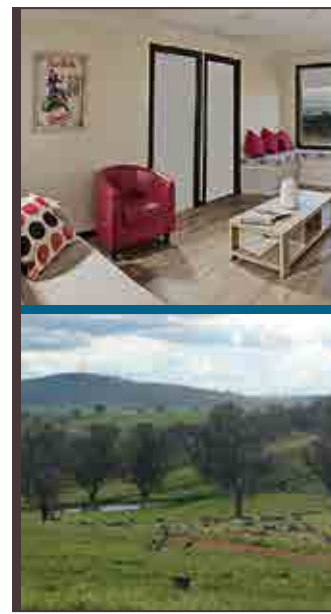
If a true country experience is what you're after, just a short mile from town you can unwind in the privacy of your own self-contained cottage with breathtaking views

Alternatively, take a longer drive out of town and experience a country retreat. Stay in one of our unique villages accompanied by the

warmth of a fire and good friends and family.

Stretch your legs without stretching the budget at the Boorowa Caravan Park. Enjoy clean bbq facilities and amenities whilst soaking up the tranquil surrounds of the Boorowa River. Enjoy room to move with the simplicity of comfortable cabins or the confines of your tent. Make it a true bush experience but, be assured that good coffee is just around the corner if you desire.

Why wait - all this is on offer when you visit Boorowa.



Wantana Cottage Farm Stay

Situated on working sheep farm of 1000 acres.

Spectacular views, clean country fresh air. Great place to relax, unwind with friends and family. Three bedroom fully self-contained cottage. 10kms from the beautiful rural country Town of Boorowa. Minimum stay one night.

'Wantana' 854 Rugby Rd
Boorowa NSW 2586

m. 0427 200 981

e. wantana@bigpond.com

Find us on



Boorowa Caravan Park

Come and enjoy a tranquil visit at the Boorowa Caravan Park in quiet, shady location beside the Boorowa River.

Motorhomes welcome, dump site located beside the caravan park. Animals welcome. Two on site cabins for up to 4 people.

Powered and unpowered sites.

93-95 Brial Street,
Boorowa NSW 2586

p. 02 6385 3658

m. 0427 853 658

e. boorowa@hilltops.nsw.gov.au



The Old School Country Retreat

A large country house sleeping twelve for self-contained accommodation.

Relax on the down sofa by a warm log fire and forget the speed at which you usually live. The school creates an atmosphere that encourages relaxation.

A return to life's simple pleasures.

78 Yass Street,
Rye Park NSW 2586

p. 02 4845 1230

f. 02 4845 1260

m. 0418 483 613

e. theoldschool@bigpond.com

w. www.theoldschool.com.au



Beautiful Shops

A LITTLE RETAIL THERAPY IS GOOD FOR THE SOUL

A treasure trove of shops and antiques can be found in Boorowa.

Step back in time by meandering through the streets of Boorowa calling on our antique and collectable emporiums, tap into their local knowledge and expertise on their wares and see what hidden treasures you can discover.

Home wares, gifts and the latest fashion accessory tastefully displayed in boutique shops for that unique shopping experience.

An array of scented candles to light up your world and create atmosphere in your home, oilcloth quality tablecloths like in Grandma's day, sauces and spices to bring out your creativity in the kitchen, quality needlework and handcrafted products to take home for that someone special.

There is something for everyone!



Indulge and be pampered

SPOIL YOURSELF OR YOUR LOVED ONE

Why not take the time to relax and indulge by having a specialised treatment with our local therapists.

in a tranquil setting or a new hairdo at the many hairdressers located in the CBD.

Natural beauty products that are made to heal and soothe your soul. Treat yourself to a luxurious massage

Call for an appointment or make a booking for a loved one to experience.



Carmen Collectables

PRELOVED FURNITURE & COLLECTABLES

We are pleased to offer friendly personal service in your selection of quality chinaware and furniture items.

Also available are kitchenalia, retro, vintage & crystal items; tools & old farm wheels.

18-18a Marsden Street,
Boorowa NSW 2586
p. 02 6385 6202
m. 0488 577 489
e. carmenthompson@skymesh.com.au



Find us on

Hurley-Burley

BOOROWA BORN AND BRED
Est 2005

Oil cloth aprons and tablecloths, bindi busters and 'The Mix' pepper

Hurley-Burley is fun funky and completely irresistible!

Suzanne Hurley
47 Market Street, Boorowa NSW 2586

p. 02 6385 1122
m. 0427 706 108
e. hurley-burley@bigpond.com.au
w. www.hurley-burley.com.au



Home Finch

A unique shopping experience awaits you at Home Finch.

Handmade jewellery and candles, botanical skincare and edgy homewares. Always something new and exciting in store.

Pop in and see Ally or Ramona to treat yourself, or for that special gift.

4 Marsden Street, Boorowa NSW 2586
m. 0400 489 266 / 0400 725 311
e. homefinchboorowa@gmail.com
w. home-finch-boorowa.myshopify.com

Find us on

Debs Massage and Natural Therapies

Indulge and relax in an atmosphere of harmony and balance.

Your wellness clinic.

Treatments include massage, reiki and enar treatments.

82A Pudman Street,
Boorowa NSW 2586
m. 0417 427 145



Boorowa Emporium

BEAUTY TREATMENT ROOM

Offering you a great range of treatments: Remedial Stone Fusion massage, Facial, Lash & Brow tinting, Manicure, Pedicure and Waxing. Making you feel fresh and rejuvenated.

Book your appointment today!

20 Parnell Street,
Boorowa NSW 2586

m. 0428 394 466
e. treesgalvin@bigpond.com

Find us on



Beautiful Produce

TEMPT YOUR TASTEBUDS

The area is recognised worldwide as a wool growing region without peer and is famous for its Merino Studs.

Prime beef cattle and fat lambs can be seen grazing contently on the undulating slopes.

The change of seasons heralds a change of pace and activity in the agricultural industry. Year round the landscape transforms in a kaleidoscope of colour: from browns and rustic reds through to greens and gold.

Depending on the time of year you'll find farmers on tractors preparing land and sowing their chosen cereal

crops of wheat, barley triticale or oats. See the windrowers cut canola in preparation for harvest, contractors baling hay and silage and header drivers reaping the golden grain.

In late October to November the landscape transforms into a living patchwork. The flowering golden canola interspersed with the iridescent greens of cereal crops create stunning vistas.

Many visitors marvel at the panorama and travel

to Boorowa to enjoy the spectacle.

Boorowa encompasses the Hilltops Region where stone fruit and cherries are grown in abundance.

Discovered by chance or sought by design, the sheer scale and magnitude of the Boorowa region's bounty is a wonder to behold and a delight to the tastebuds.

Whether savoured locally or back at home, chances are produce from our region will find their way to your table.

Beautiful Food and Wine

VISIT THE HILLTOPS REGION

Hilltops is rapidly emerging as one of the most exciting viticultural regions in Australia.

The high altitude, coupled with the dry summer and autumn, provides excellent ripening conditions. This and the rich red soils enables the production of wines with great intensity of flavour and finesse.

The climate also provides excellent ripening conditions for stone fruit. Cherries are a local hero along with other stone fruit including plums, peaches, nectarines, apricots along with figs and other niche fruit.

In addition the region is known for quality broad acre crops, livestock and intensive agriculture such as pig, duck and poultry farms. They are all vital ingredients for value adding and cottage industries Residents and locals alike are spoilt for choice in locally made jams, chutneys, pies and condiments.

For more information visit www.hilltops.com.au.

BROCHURES

Pick up your copy of the 'Hilltops Food & Wine and Produce' and 'Antique Trails' Brochures from the region's Visitor Information Centres.



Walsh's Country Kitchen

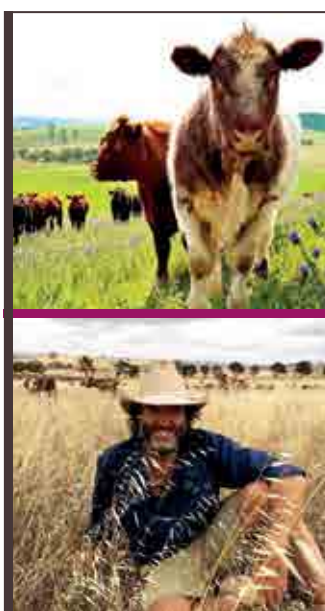
Walsh's Country Kitchen captures the flavour of bygone era in a collection of carefully crafted gourmet and heritage style jams, chutneys pickles and preserves.

All the ingredients are carefully selected and cooked in the traditional way just as our grandmother's did, slowly and gently.

There is no compromise to quality.

Stockist at the Visitor Information Centre, Marsden Street.

p. 02 6385 3251 f. 02 6385 1251
e. walshshomemade@bigpond.com



Charlie Arnott - Natural Grass Fed Beef

Our cattle spend all their lives on our property, handled with the greatest of care and managed without the use of chemicals, vaccinations or hormones.

Our beef is 100% grass fed, rich in Omega 3's and the healthiest and most sustainable beef you could feed your family. On-site biodynamic farming workshops available.

'Hanaminno' 810 Brial Road,
Boorowa NSW 2586
m. 0412 623 422
e. charlie@charliearnott.com.au
w. www.charliearnott.com.au

Beautiful Lifestyle

NOW IS THE TIME TO RELOCATE AND MAKE BOOROWA YOUR HOME

Enjoy four distinct seasons, amazing walks, great schools and healthcare facilities, affordable living, boutique shopping and a strong sense of community.

Boorowa is a place where you and your family will feel welcome. Kids will never be bored, even the big kids.

There are locals who are sixth generational families born and bred, alongside those who have fallen in love with the community and are proud to call Boorowa their home.

Many often move to Boorowa to leave the city lights to discover a sense of community spirit that has their social calendar full.

BOOROWA IS THE PLACE WHERE EVERYONE WANTS TO BE!



BOOROWA REMAINS LARGELY UNDISCOVERED AND THEREFORE CONTINUES TO OFFER VERY AFFORDABLE HOUSING... YARN WITH ONE OF OUR LOCAL AGENTS.

Beautiful Homes

LIVING THAT'S AFFORDABLE

Whether you intend on buying a piece of land, investing in a property, or purchasing a home, Boorowa is the place for you!

Just one and half hours from Canberra City it is the perfect spot to relocate and experience a country lifestyle.

There is a wide choice of styles, sizes and eras available. From pastoral acreages, beautiful federation homes, small village cottages, retirement units and modern homes.

QUALITY BUILDING BLOCKS

- From \$60,000.
- Residential building blocks in Boorowa are scarce.

FEDERATION HOMES / SUBSTANTIAL BRICK HOMES

- From \$200,000.
- Federation homes in Boorowa don't often come

on the market and when they do, they are highly sought so keep an eye out.

1970'S/1980'S HOMES

- From \$180,000.
- There are some good buys to be had in this bracket with homes that either have been or are in need of restoration.

1990'S/2000'S HOMES PRESENT LIKE A DISPLAY HOME

- From \$250,000.
- There are many good quality home in the \$250,000 to \$350,000 that demonstrate Boorowa's affordability.

RETIREMENT UNITS / SELF CARE UNITS

- From \$200,000.
- Very comfortable units - contact Burrowa House for further information.

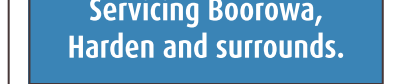
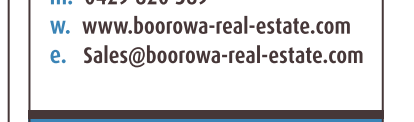
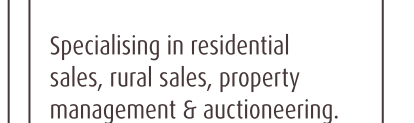
RURAL/LIFESTYLE

- From \$400,000.
- Comfortable Country homes on acreage in peaceful surrounds.

RURAL

- From \$1,000/ac to \$1,800ac
- Quality grazing and farming land is very sought after in this highly fertile area.

* Please note: All prices are approximate and were supplied in winter 2016. These prices and property styles reflect real estate trends at the time and are no guarantee to future prices or property availability. Thanks to Boorowa Real Estate for supplying information.



BOOROWA REAL ESTATE

Specialising in residential sales, rural sales, property management & auctioneering.

34 Marsden Street, Boorowa NSW 2586

p. 02 6385 3337
f. 02 63853 339
m. 0429 820 389
w. www.boorowa-real-estate.com
e. Sales@boorowa-real-estate.com

Servicing Boorowa, Harden and surrounds.



Beautiful Schools

QUALITY EDUCATION WITH SMALL CLASS SIZES

If you are thinking about moving to the Boorowa region there are excellent early, primary and secondary education providers.

The local schools provide their students with excellent education in a warm and nurturing environment. Students within the region are provided with a range of opportunities comparable to their urban counterparts.

Consider giving your children that country learning experience.



EDUCATION OPTIONS

One Early Education Centre:
6 weeks to 5 years

Three primary schools:
St Josephs Boorowa,
Rye Park and Rugby.

One Kindergarten through to Year 12 School:
Boorowa Central School



Beautiful Health and Wellbeing

YOUR HEALTH AND WELLBEING IS WELL LOOKED AFTER HERE IN BOOROWA

We have excellent healthcare services, retirement housing and professional care.

Boorowa offers a range of health and wellbeing classes and activities for all ages and levels of intensity.

In a friendly and welcoming community - all of this is waiting for you and your family.

BOOROWA HAS TWO MEDICAL CENTRES, ONE LOCAL HOSPITAL AND A NUMBER OF ALLIED HEALTH SERVICES.



Boorowa Pharmacy

For all your medical, cosmetic, weight loss, smoking deterrent, skin & beauty, and family planning needs.

Located on the corner of Marsden & Pudman Street.

11 Marsden Street (PO Box 1)
Boorowa NSW 2586

p. 02 6385 3211

f. 02 6385 1604

e. sue@boorowapharmacy.com.au



Boorowa Early Education Centre Inc

The Boorowa Early Education Centre began operation in July 2016.

The BEE Centre is an approved, community operated, early childhood facility, providing care and education to children aged 6 weeks to 5yrs.

The Centre prides itself in following its philosophy 'Learning through play'.

59 Brial Street, Boorowa NSW 2586

p. 02 6385 3467 f. 02 6385 3629

e. office@beecentre.net.au

w. www.beecentre.net.au



Boorowa Community Transport Service

We provide transport links to the community servicing people who are aged, disabled or transport disadvantaged.

- Transport to medical appointments within Boorowa and to regional centres.
- Shopping and social transport.
- Fortnightly bus service to Young.
- Bus Service to Canberra via Yass on Monday, Wednesday and Friday.

133 Main Street, Young NSW 2594

p. 02 6382 1518

f. 02 6382 7449

e. youngct@bigpond.com

w. www.youngcommunitytransport.org.au



Boorowa Library

Writers Group, Book Club, Audio Books, e-books, Magazines.

Open Mon/Wed/Fri 3pm-5pm.

Sat 10am-12pm with regular varied craft workshops, every 2nd Thur 9am-1pm.

Children's Puggletime every Friday. This service is free for all the community to enjoy!

6-8 Marsden Street,
Boorowa NSW 2586

p. 02 6380 2000

e. boorowalibrary@hilltops.nsw.gov.au





Crowes Shearing

Offering professional, reliable teams for urban shearing and crutching, year round in Boorowa and surrounding districts.

59 Ford Street,
(PO Box 117)
Boorowa NSW 2586
p. 02 6385 3162
m. 0428 853 162
w. www.shearingjobs.com



Shearing Contractor

Corkhills Ag Services

Local people devoted to providing products and services tailored specifically for your needs.

4/8 Marsden Street,
Boorowa NSW 2586

p. 02 6385 3611
f. 02 6385 3866
m. 0427 012 081
e. corkhillsag@outlook.com

Find us on 

Agriculture Services

Beautiful Businesses

SMALL BUSINESSES AND PROFESSIONALS ARE ESSENTIAL TO A RURAL COMMUNITY

Here is a helpful collection of some fantastic local businesses.

With skilled people, reliable and friendly service to meet all your needs.

TIK Electrical Pty Ltd

TIK Electrical is a local family run business.

We do domestic, commercial & industrial installation & repairs no job too big or small.

12-16 Campbell Street
Boorowa NSW 2586

p. 02 6385 3588
m. 0418 153 588
e. electrician2@bigpond.com

LIC NO: 5489C

Licensed Electrician

CROSS BUILD

We offer local quality services in building new homes, renovations, plan drafting, domestic, commercial and rural construction.

When quality matters, call Cross Build for professional service and advice. LIC NO. 198556C

37 Long Street,
Boorowa NSW 2586

p. 02 6385 1078
m. 0429 017 509
e. crossbuild@live.com.au

Licensed Builder

Cusack Electrical

Service, installations and renovations. Test & Tag.

All lighting, power and data cable installation.

54 Caple Street, Young NSW 2594

p. 02 6382 5310
m. 0429 623 717
e. simonjcusack@hotmail.com

LIC NO. 171870C

Licensed Electrician

A.L. Banks

New homes, renovations, sheds, all building works.

No Job Too Big or Too Small.

PO Box 4, Boorowa NSW 2586

p. 02 6385 3594
f. 02 6385 3616
m. 0427 004 245
e. alanbanks@bigpond.com

LIC NO. 38979

Licensed Builder



Stonehaven Furniture and Building Supplies

For all your joinery and building supplies.

Kitchens, Laundries, Wardrobes and Furniture 'Keeping it Local'.

67-71 Court Street,
Boorowa NSW 2586

p. 02 6385 3196
f. 02 6385 1037
e. stoneha@bigpond.net.au

LIC NO. 221227C

Find us on  / StonehavenFurnitureBuildingSupplies



SOUTH WEST SHOOTING SUPPLIES

major stockists

Call Now
6385 3695

p. 02 6385 3695
f. 02 6385 3922
w. www.enforcer.com.au

Find us on  /enforcerrugby

South West Shooting Supplies Corkhill's Engineering

South West Shooting Supplies comes under the umbrella of Corkhill's Engineering.

We are stockists of some of the finest quality brands of firearms in the South West region. We specialise in high grade shotguns and rifles and have an extensive range of accessories and ammunition in stock.

2-6 Corcorans Court (PO Box 62)
Boorowa NSW 2586

p. 02 6385 3695
f. 02 6385 3922
w. www.enforcer.com.au

Find us on  /enforcerrugby

Performance Floats

Manufacturers of quality horse transport.

We custom build high quality Floats, Goosenecks, Horse Trucks and Custom leisure bodies.

5 Corcoran Court, Boorowa NSW 2586

p. 02 6385 1172
f. 02 6385 1219
m. 0423 663 823
e. richard@performancefloats.com
w. www.performancefloats.com

HORSE TRANSPORTATION



Boorowa
Community Bank® Branch

32 Marsden Street,
Boorowa
Phone 6385 3277

 **Bendigo Bank**
Bigger than a bank.

Bendigo and Adelaide Bank Limited,
ABN 11 068 049 178 AFSL 237879.
(S52432) (06/15)

Gregory & McCarthy Accountants ACCOUNTANTS — ADVISORS — AUDITORS

We specialise in providing the following services to small business, individual clients and primary production clients:

- Income tax planning, preparation and advice
- Business and succession planning, structuring and advice
- GST and BAS assistance and advice
- Payroll and bookkeeping
- Superannuation planning and SMSF administration
- Computerised accounting packages
- Auditing

Let us help you achieve your financial and business goals

94 Pudman Street,
Boorowa NSW 2586

p. 02 6385 3117
e. boorowa@gregmc.com.au

75 Lead Street,
Yass NSW 2582

p. 02 6226 1344
e. email@gregmc.com.au



www.gregoryandmccarthy.com.au



Travelling with Pets

Boorowa welcomes visitors travelling with their furry family.

Boorowa Vet Clinic



Boorowa Vet Clinic offers a range of animal treatments to assist your every needs. No animal too big or too small.

110 Marsden Street (PO Box 25)
Boorowa NSW 2586

p. 02 6385 3877

f. 02 6385 3110

e. ron@boorowavetclinic.com.au

Your animals health is important to us.

Avondale Park Boarding Kennels & Cattery



Caring for your pet in safe, secure, sheltered surrounds.
Competitive Prices.

Brial Road – 100 Strathmore Lane,
Boorowa NSW 2586

p. 02 6385 3348

m. 0428 853 348

e. avondalepark2@gmail.com

Inspections welcome.

Sporting Clubs + Organisations

Aqua-Aerobics

Boorowa Olympic Pool – summer
Contact | P. 02 6385 3157

Art Classes

Boorowa Library | P. 02 6380 2000

Basketball Association

Greta Campbell | P. 02 6385 3368

Boorowa Gym

Boorowa Ex-services Club | P. 02 6385 3338

- Personal Training

- Boxing

- Circuit

- Body Pump

- Weights

- Pilates

Bowling

Men's Bowling Club

John Crowe | P. 02 6385 3457

Cadets

Rod Short | M. 0420 985 706

Cards

Boorowa Recreation Club | P. 02 6385 3224

Cricket

Cricket Junior and Senior

Phil Coggins | M. 0402 431 570

Darts

Ask at the local pubs of clubs about getting involved.

Fishing

Boorowa Ex-services Fishing Club

Gavin Campbell | P. 02 6385 3113

Roger Mason | P. 02 6385 8216

Football

Boorowa Rugby Club

Justin Fleming | P. 6385 3337

Boorowa Senior Rugby League

Murray Armour | M. 0488 596 678

Junior Rugby League

Shane Cross | M. 0429 017 509

Golf

Boorowa Recreation Club | P: 02 6385 3224

Gun Club

Gary Martin | P. 02 6385 3220

Gymnastics

Carol Harpley | P. 02 6385 3375

M+D Society

Peter Roberts | P. 02 6385 3560

Needle Work

Sina Banks | P. 02 6385 3594

Patchwork and Quilting

Robyn Pescud | P. 02 6385 1770

Pony Club

Email: boorowapc@hotmail.com

Soccer Club

Andrew Southwell | P. 02 6227 2260

Squash Club

Boorowa Ex-services Club | P. 6385 3338

Swimming Club

Sharon Hinds

E: sharon.hinds70@bigpond.com

Tennis Club

Sue Corcoran | P. 02 6385 3486

Touch Football

Kim Blomfield | M. 0408 696 104

Walking Group

Sharee Darmody | M. 0427 200 981

RSL Sub Branch

Phil Armitage | M. 0416 292 767

CWA

Yvonne Murphy | P. 02 6382 2705

Lions

Marilyn Miller | P. 02 6385 3086

Probus

Helen McGrath | P. 02 6385 3715

Rotary

Jayne Apps | M. 0428 622 755

Mens Den

David Evans | P. 02 6385 1109

Garden Club

Albert Wilson | P. 02 6385 1600

Boorowa Business Chamber

Mick Ward | P. 02 6385 3000

Boorowa Historical Society

Joy Nelson | P. 02 6385 1814

Catholic Women's League

Carmel Barnes | P. 02 6385 8485

Boorowa Amateur Picnic Race Committee

Steve Pescud | P. 02 6385 1770

Boorowa Australia Day

John Snelling | P. 02 6385 3348

Boorowa Education Foundation

Justin Fleming | M. 0429 820 389

Boorowa Show Society

Narelle Nixon | P. 02 6385 5217

Suggested Drive Itineraries

You'll enhance your stay in Boorowa when you choose to explore further afield and enjoy some of the most scenic locations in the region.

DAY 1: HILLTOPS

Take a day to explore the Hilltops Region home to cool climate wines, pioneering history, antiques, museums and fresh produce. Linger in the Cherry Capital, Young, and Harden Murrumburrah where the Light Horse Movement began. The route connects the villages of Murringo, Koorawatha, Wombat, Wallendbeen and Bowning, all with something special to offer.

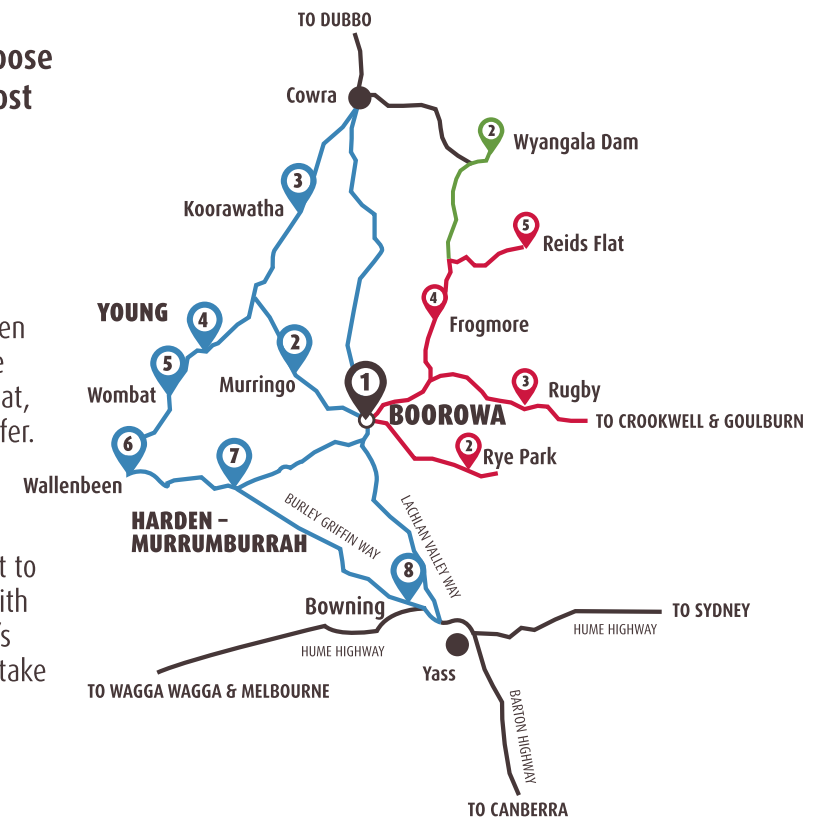
DAY 2: THE VILLAGE TOUR

Discover the rich history of the region when you venture out to the villages of Reids Flat, Frogmore, Rugby and Rye Park. With panoramic views, distinctive history and sealed roads there's plenty of history to uncover. Choose one or two villages, or take in them all.

DAY 3: WYANGALA DAM

Head north to Wyangala Dam on the Rugby and Frogmore roads to enjoy the views, water sports and bushwalking. Fish, sail, ski or soak up the sun. There's many options. The dam has a capacity two and half times the size of Sydney Harbour and is a perfect recreation location

For more details, contact the Boorowa Visitor Information Centre on 02 6385 3885 or visit www.hilltopsregion.com.au



This map may be subject to change without notice. Please contact the Boorowa or Young Visitor Information Centre for further details or updates.



Boorowa Service Station

Friendly, Local and Independent.

EPAY, ICE, Most Cards, Food, El Gas, Coffee, Fishing Gear.

Your local fuel merchant providing oil and fuel for vehicles. We stock a range of fishing tackle including worms. Grab yourself a hot or cold drink and a pie or sandwich to go.

84-86 Marsden Street, Boorowa NSW 2586

p. 02 6385 1601

m 0429 233 442

e. stuj.7@bigpond.com

BOOROWA

beautiful